



Vehicle Monitoring Quick Reference Guide



Powered by Delphi

Welcome

You're about to experience a powerful device that will deliver a new level of convenience and peace of mind with your vehicle. When combined with the Delphi Connect smartphone app or website, you can:

- Track your vehicle's location in real-time, and create virtual geo-fence boundaries.
- Receive alerts for vehicle issues and driving conditions, such as low battery voltage, geo-fence crossings, excessive speed and high engine RPM.
- Track your driving history and see past trips on a map.
- Make your key fob functions available on your smartphone or online for convenient use anywhere. See delphiconnect.com/fitment for vehicle compatibility.
- Check the health and status of your vehicle and decode a "check engine light".
- Find where you parked your vehicle.

This guide will get you started. There's a comprehensive user guide online at:

delphiconnect.com/manual.

NOTE: The screen images and icons shown are for reference only. Changes may occur in the future.

What Vehicle Does It Work With?

The Vehicle Monitoring system works with most 1996 and newer vehicles (cars, light trucks, SUVs and minivans) sold in the United States including domestic, Asian and European imports.

Before you start installation, please visit delphiconnect.com/fitment to make sure your vehicle is compatible with the Vehicle Monitoring system.

The fitment guide will also tell you if a Relocation Kit* is recommended for your vehicle. The Delphi relocation kit can be purchased at uscellular.com

*Sold Separately

Package Contents

The Vehicle Monitoring Module
Quick Reference Guide
Product Safety and Warranty
Guide



If anything is missing, please contact U.S. Cellular[®] Customer Service at **1(888) 944-9400** or by dialing **611** from your mobile phone.

My Vehicle Monitoring mobile number (found on your receipt):

Equipment Overview



1. OBD connector (plugs into vehicle 's OBD port)
2. Function button
3. Status LED
4. Service connector (manufacturer use only)
5. Label, showing product information

System Requirements

The Delphi Connect app works on:

- Android 2.2 and later
- Apple iOS 5.0 and later

The Delphi Connect website at uscc.delphiconnect.com works with:

- Internet Explorer 7 and later
- Google Chrome
- Apple Safari
- Firefox

Installation Requirements

- A supported vehicle identified in the fitment guide located at delphiconnect.com/fitment.
- Relocation Kit* if required.
- An activated Vehicle Monitoring with a qualified U.S. Cellular[®] wireless service plan.

If you do not have a U.S. Cellular service plan or activated Vehicle Monitoring Module, please call **1(888) 944-9400** or by dialing **611** from your mobile phone to activate this product before starting installation.

When asked for Device ID enter the MEID Dec found on the label of the module.

- Use your U.S. Cellular smartphone to check that you have a strong signal where your vehicle is parked.
- Make sure your vehicle is parked outside in a safe location and the engine is turned off.

Smartphone Setup

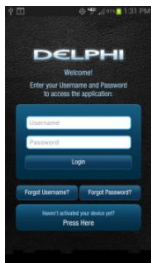
Step 1: Download Delphi Connect Smartphone App

- Launch your smartphone's app store - either Google Play Store for Android or App Store for iPhone.
- Search for the Delphi Connect app and download it to your smartphone.

If the app is not available for your phone, please use the website at uscc.delphiconnect.com.

Step 2: Sign In to your Delphi Account

Launch the Delphi Connect app.



- In the Username field, enter the **Registration Key** exactly as it is printed on the module label – including the dash.
- In the Password field, enter the **MEID Dec** exactly as it is printed on the module label.
- Review and accept the privacy statement and terms of use.
- When prompted, change Username and Password to something easy to remember but hard for other people to guess. Passwords must be at least six characters long and include at least one number. Usernames can be any length and do not have to include a number.
- Now you're ready to install the module in your vehicle.

Password:

Username:

Step 3: Find Your Vehicle's OBD Connector Port

It's usually on or under the dash, on the driver's side. Other possible locations are the center console area or inside the glove compartment.

Need help finding your vehicles OBD port?

- Use the OBD Locator in the app to see a picture of where the OBD port is in your vehicle. After logging in for the first time, click the button labeled OBD LOCATOR. If needed, you can access the locator from the web site and from the app. On the website, click on your Username in the upper right hand corner. From the drop down menu, click the button labeled OBD LOCATOR. In the mobile app, this function is located in Menu > Settings.

NOTE: The Delphi Connect app will remain logged in indefinitely, unless the user logs out using the MENU and Log Out selection.

NOTE: The Delphi Connect app will be updated periodically and you will receive notification of updates via standard Android and iOS app update notifications.

Step 4: Install Your Module

Use your U.S. Cellular[®] smartphone to check that you have a strong signal where your vehicle is parked.

- Make sure your vehicle is parked outside in a safe location and the engine is turned off.
- Now plug the module into the OBD port (or into the extension cable if it is required). **Make sure that the module is fully seated.**
- Wait for the Status LED to turn solid blue.

For helpful installation Tips – See delphiconnect.com/install

Step 5: Initiate Module Setup

Stop!

Do not proceed until the Status LED is solid blue, indicating activation on the U.S. Cellular[®] network.

- Insert your vehicle's ignition key and turn it to the on position (not ACC/Accessory). **Do not start the engine!**
 - Typically, all of the warning lamps on the dashboard will illuminate briefly in this position
 - For pushbutton-start vehicles, the procedure is typically to push the start button without your foot on the brake (check your vehicle owner's manual to determine how many presses are required to turn the ignition on).

- Press and hold the Function Button on the side of the Vehicle Monitoring Module until the Status LED blinks red one time. This will occur after approximately 5 seconds. Then release the Function Button. The LED will blink red while vehicle setup occurs.
- Wait up to 30 seconds for the LED to display a mix of solid and blinking green.
- Wait an additional 10 seconds for the LED to go out.
- When the LED begins to flash blue every 10 seconds, setup is complete.

Stop! Your vehicle may not be compatible with the Vehicle Monitoring system (check the fitment guide at delphiconnect.com/fitment) or you did not place the ignition in the On position. Do not proceed if the Status LED never turned green but instead returned to solid blue.

NOTE: The first time the Vehicle Monitoring connects to the U.S. Cellular® network, it will perform a one-time network setup which will take several minutes.

NOTE: To avoid any unnecessary drain on the vehicle battery, it is recommended not to leave the Vehicle Monitoring in the solid blue state for more than 24 hours.

Step 6: Verify Module Setup

- Start the engine and let it run for at least 30 seconds.
- Stop the engine and wait at least 20 seconds.

You are now ready to access your vehicle information using the Delphi Connect app.

Finish Setup Using the Delphi Connect App

- Open the Delphi Connect app and, if needed, Sign In using the Username and Password you created in Step 2. See page 8.
- You should see the Dashboard screen. If not, tap the Retry button.
- If you still do not see the Dashboard screen, go to the Troubleshooting section of this guide.

Congratulations, you have completed setting up your module.



Module Removal & Re-Pairing Procedure

In the event that you need to bring your vehicle in for service or to have it inspected, where the OBD port needs to be accessible, it is recommended that you remove the Vehicle Monitoring from your OBD port. In order to repair your module with your vehicle, please refer to page 11 and follow steps 5 and 6. Anytime the Vehicle Monitoring Module is removed from the OBD port, these instructions should be followed.

Key Fob Setup Requirements

Stop! Before You Begin

- Verify the key fob feature will work with your vehicle by visiting the fitment guide at delphiconnect.com/fitment.

If your vehicle is not compatible, this feature will not work in your vehicle at this time. However, your vehicle may become compatible at a later date.

Your Vehicle Monitoring system allows you to program up to two key fobs into the module.

NOTE: It is necessary to perform this step in your vehicle because you may be prompted at times to turn your ignition key and press specific vehicle buttons.

Key Fob Setup

Pair Key Fob with Your Vehicle Monitorings

- Select Menu by tapping the Delphi icon in the Delphi Connect app. Tap the Key Fob menu option.
- When prompted to configure the key fob, tap YES and follow the prompts.

Following successful pairing of your module's key fob feature, you should be able to use your Delphi Connect app to send key fob commands over the U.S. Cellular[®] Network to your vehicle in the same manner as you would with your manufacturer's key fob. In addition, you can also use the website to send key fob commands to your vehicle with your internet connection. Setup is complete and you may proceed to Application & Service Features unless you would like to setup Bluetooth[®] connectivity between your smartphone and your module.

NOTE: Bluetooth is a registered trademark of Bluetooth SIG, Inc.

Bluetooth® Pairing (Direct Connect)

The Bluetooth® (Direct Connect) feature lets you access the key fob functions on your Delphi Connect app when within Bluetooth range of the Vehicle Monitoring (up to 30 feet).

This feature requires:

- Successful completion of the Key Fob Setup.
- A compatible smartphone with Bluetooth.

Step 1: Pair Smartphone Bluetooth to Vehicle Monitoring Module

- Access the Delphi Connect app MENU by tapping the Delphi icon in the upper-left corner on an Android or the menu icon on an iPhone.
- Tap Settings followed by Vehicle Settings.
- Tap the vehicle in which the Vehicle Monitoring is currently installed.
- Tap Bluetooth Settings.
- Tap Discover to activate Bluetooth pairing.
- The Status LED on your module should begin flashing blue.
- Press your phone's Home button.

NOTE: Bluetooth is a registered trademark of Bluetooth SIG, Inc.

- Follow the procedures for turning on your smartphone's Bluetooth[®] feature.
- Tap Search for Devices if your phone doesn't begin scanning automatically.
- When ACT212USCC appears as an available device select it.
- The device ACT212USCC should now show as paired.

STEP 2: Authorize Smartphone's Bluetooth Key Fob Functionality

- Return to the Delphi Connect app. If your phone doesn't appear on the list of Bluetooth phones, tap the Back button and then re-enter Bluetooth Settings.
- Your phone will be listed as Unauthorized.
- Tap the name of your phone.
- Tap Authorize to enable your phone to provide Key Fob control over Bluetooth.
- Tap top left icon on an Android or back on the iPhone until you return to the Delphi Connect Menu page.

NOTE: Bluetooth is a registered trademark of Bluetooth SIG, Inc.

- Observe the LED on the Vehicle Monitoring and wait until it returns to flashing blue every 10 seconds.
- Tap the Key Fob menu item and test the buttons.

Congratulations, Setup is complete!

NOTE: The Bluetooth® discovery mode will last for 60 seconds. You must complete the pairing within this time.

NOTE: Bluetooth is a registered trademark of Bluetooth SIG, Inc.

Application & Service Features

Once you have activated and paired your Vehicle Monitoring module, you can enjoy many product features which include:

Dashboard

App



Website



Key Fob

Use your smartphone as a key.

App



Website



NOTE: Compatible vehicles only.

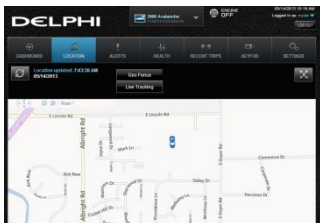
Find My Car

No more wandering. Use this map feature to find where you've parked your vehicle.

App



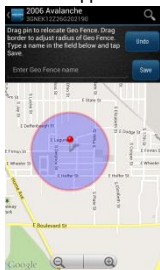
Website



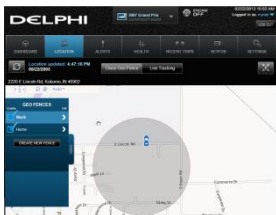
Geo-Fence Boundaries

Set up a virtual geo-fence. If your vehicle is driven in or out of the fenced-in area, you'll be alerted.

App



Website



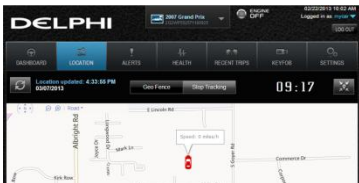
Live Tracking

Want to see where your child is driving? Track the vehicle on a map in real time. On the smartphone app, you can also speed dial 911.

App



Website



Alerts

Receive alerts for vehicle issues and driving conditions, such as low battery voltage, geo-fence crossings, excessive speed and high RPM. Alerts can also be sent to email addresses and as text messages (SMS) to mobile phones.

App



Website



Vehicle Health

Does your vehicle have health issues? If so, what do they mean? Find the details here.

App



2005 Galant
REFRESHED at 10:23 AM
02/19/2013

Health Summary	DTC Code
Mass Air Flow Sensor	P0100 02/19/2013 10:26 AM
Injector Circuit Malfunction	P0200 02/19/2013 10:26 AM
Cylinder Misfire Detected Random Cylinders	P0300 02/19/2013 10:26 AM
C0300	C0300 02/19/2013 10:26 AM
B0200	B0200 02/19/2013 10:26 AM
U0100	U0100 02/19/2013

Website



DELPHI
2006 Avalanche
ENGINE OFF
8/22/2013 10:02 AM
Logged in as mycar
LOG OUT

DASHBOARD LOCATION ALERTS HEALTH RECENT TRIPS KEYFobs SETTINGS

REFRESHED at 4:39:34 PM
03/07/2013

1 2 3 4 5
1 of 6

Health Summary	Date & Time	DTC Code
Mass Air Flow Sensor	03/05/2013 9:43 AM	P0100
Injector Circuit Malfunction	03/05/2013 9:43 AM	P0200
Cylinder Misfire Detected Random Cylinders	03/05/2013 9:43 AM	P0300

Recent Trips

Get a summary of your trips. Includes dates and times and shows the route on a map.

App



2013 Impala
REFRESHED @ 1:30 PM
8/17/2013

Date	Time	Distance
01/11/2013	11:14 PM - 11:26 PM	3.8 miles
01/11/2013	9:07 PM - 9:29 PM	4.1 miles
01/11/2013	1:14 AM - 1:27 AM	4.3 miles
01/10/2013	9:27 PM - 9:40 PM	4.3 miles
01/09/2013	12:41 AM - 12:52 AM	3.8 miles
01/09/2013	11:00 PM - 11:16 PM	3.3 miles
01/09/2013	4:06 AM - 4:27 AM	3.8 miles
01/07/2013	8:37 PM - 8:58 PM	5.0 miles
01/07/2013	4:50 PM - 5:13 PM	4.3 miles

Website



DELPHI 2000 AmstarStar ENGINE OFF 02/23/2013 10:02 AM Logged in as mycar 100.00%

DASHBOARD LOCATION ALERTS HEALTH RECENT TRIPS KEYCODE SETTINGS

REFRESHED @ 4:46:48 PM 03/07/2013 6 7 8 9 10 CLEAR ALL

Trip Date	Time	Distance	Trip Summary & Map
02/23/2013	10:49 AM - 10:51 AM	0.1 miles	>
02/23/2013	8:59 AM - 9:06 AM	2.3 miles	>
02/23/2013	7:57 AM - 8:46 AM	39.8 miles	>
02/22/2013	12:59 PM - 1:04 PM	1.4 miles	>
02/22/2013	11:41 AM - 11:54 AM	1.2 miles	>
02/22/2013	7:38 AM - 8:11 AM	28.7 miles	>

Customer Information

Your Wireless Device and Third Party Services

U.S. Cellular[®] Corporation is the mobile carrier associated with this wireless product. However, many services and features offered through the product are provided by Delphi alone or in conjunction with third parties. U.S. Cellular is not responsible for your use of your wireless device, including any damage resulting from your installation of the device and is not responsible for any non-U.S. Cellular applications, services, or any personal information you submit to Delphi or that is associated with your Delphi account or that you share with others. You will incur U.S. Cellular data usage by using this wireless device. Your relationship with U.S. Cellular is governed by your Customer Agreement, available on the U.S. Cellular website at

uscellular.com/site/legal/customer-service-agreement.html

Please review carefully all applicable terms and conditions and policies prior to using this wireless product and any associated component, application, or service.

Status LED and Troubleshooting

Understanding the Status LED

Status LED	Status (Engine On)	Status (Engine Off)
No illumination for more than 1 minute	No vehicle power to device or Device failure	<ul style="list-style-type: none"> Module will enter Deep Sleep after typically 5-10 days of no vehicle activity. Start engine or move vehicle to wake up device No vehicle power to device or Device failure – (see Troubleshooting)
Solid White	Module currently activating on wireless network	Module currently activating on wireless network
Solid Blue	Module waiting for first-time vehicle setup after plug-in. CAUTION: Engine must be OFF and ignition ON before pressing Function button.	Module waiting for first-time vehicle setup after plug-in. CAUTION: Engine must be OFF and ignition ON before pressing Function button.
Solid or Blinking Green	On wireless network <ul style="list-style-type: none"> Idle/dormant (3 blinks every 30 seconds) Ready, no data activity (solid green) Data activity (blinks with data activity) 	On wireless network <ul style="list-style-type: none"> Ready, no data activity (solid green) Data activity (blinks with data activity)
Solid or Blinking Yellow	On roaming network <ul style="list-style-type: none"> Idle/dormant (3 blinks every 30 seconds) Ready, no data activity (solid yellow) Data activity (blinks with data transfer) 	On roaming network <ul style="list-style-type: none"> Ready, no data activity (solid yellow) Data activity (blinks with data transfer)
Solid Red	No Wireless Service	NA
Blinking Red	<ul style="list-style-type: none"> Transmitting Keyfob Command to Vehicle (2 blinks) User-initiated vehicle scanning in process (1 blink per second) – CAUTION: NOT RECOMMENDED WITH ENGINE RUNNING 	<ul style="list-style-type: none"> Transmitting Keyfob Command to Vehicle (2 blinks) User-initiated vehicle scanning in process (1 blink per second) – CAUTION: DO NOT START ENGINE

Blinking Blue	<ul style="list-style-type: none"> Bluetooth® Pairing in Progress CAUTION: DO NOT UNPLUG (blinking once per second for one minute) 	<ul style="list-style-type: none"> Engine Off – Light sleep (blinking once every 10 seconds) Bluetooth® Pairing in Progress CAUTION: DO NOT UNPLUG (blinking once per second for one minute)
Blinking White	<p>Activation or firmware update in progress CAUTION: DO NOT UNPLUG</p>	<p>Activation or firmware update in progress CAUTION: DO NOT UNPLUG</p>

Troubleshooting

Issue	Likely Cause(s)	Corrective Action(s)
Can't login to my account	Incorrect Username or Password entry	First Time: Enter Registration Key from this guide or module label exactly as shown (e.g. 1a2b-3c4d) in Username field. (lowercase or UPPERCASE) Enter MEID Dec from this guide or module label exactly as shown. After first-time: Enter the username and password you created during first-time login
	No network connection to smartphone or internet connection to computer	Verify your connection to smartphone or computer is active.
Can't find OBD port on vehicle	Vehicle is older than 1996	The module is not compatible with older vehicles.
	Incorrect OBD photo in app	Call Customer Support
No LED illumination	Module is in deep sleep	Start engine, wait up to 10 seconds for LED to illuminate any color
	No power at OBD port	Check that the module is fully plugged into OBD port. Check that fuse for OBD port is not blown (see vehicle owner manual for proper fuse). Check that no pins are bent or missing from Delphi Connect connector or OBD port.
	Defective module	Replace Delphi Connect module
LED remains white	Module can't provision on wireless network	Ensure vehicle is in a wireless coverage area. Ensure your wireless account is active (call 611 from your wireless cell phone or 1 (888) 944-9400)
LED remains solid blue	Module can't complete vehicle setup	Check all OBD port connectors on module and on vehicle for dirty/corroded pins Vehicle may be incompatible. Check fitment guide (delphiconnect.com/fitment)
Can't get to Dashboard page for first time login	Module is not reaching the cloud server after cellular network activation.	Check that the module LED turns green when engine is started. If it does, call 611 from your wireless cell

(remains on OBD Locator page)		phone or 1(888) 944-9400 . If not, follow Troubleshooting according to Status LED table
No green LED with engine running, LED flashes blue every 10 seconds	Engine start wasn't detected	Turn off ignition, wait 10 seconds and restart engine. Wait up to 10 seconds to see if green LED appears. Try unplugging/replugging the module (disconnect module and repeat vehicle setup procedure)
No e-mail alerts received	Invalid or no e-mail address entered for desired alert	Check e-mail address is correct for desired alert
	Alerts not enabled	Check that the type of alert expected has been enabled in app.
No text message (SMS) alerts received	Invalid or no mobile number entered for desired alert	Check that mobile number is entered correctly in alert settings
	Alerts not enabled	Check that the type of alert expected has been enabled in settings
	Receiving text message (SMS) has not been allowed on mobile phone	Check phone for a message requesting permission to send alert messages to phone, or, remove and re-enter mobile number in the desired alert, this will generate a text message to the mobile phone, follow the directions in the message to allow alert messaging to your phone
Can't get to Key Fob setup page	No internet connection to smartphone or computer	Check your internet connection
	Cloud server problem	Wait a few minutes and try again. If still not working, call customer support
Can't get Delphi Connect module Key Fob to pair with my vehicle	Incompatible vehicle	Check fitment guide (delphiconnect.com/fitment)
	Procedure not followed exactly	Check that you have followed every step exactly as indicated
	Pairing adapter required	Check fitment guide (delphiconnect.com/fitment)
	FOB Pairing server problem	Wait several minutes and try again. If still not working, call 1 (888) 861-2651
Can't get the module Key Fob to control	Not paired	See "Can't get the module Key Fob to pair with my vehicle"

vehicle keyless entry system	No internet connection to smartphone, computer or module	Check internet connection to smartphone or computer. Start engine and watch for green or yellow LED activity. If LED remains red, the module has no cellular connection
	OEM vehicle restriction	Check if the OEM key fob can perform the same feature. If not, it is a vehicle restriction. Read the vehicle owner's manual about your remote keyless entry system.
Can't pair my smartphone to the module with Bluetooth®	Incompatible smartphone	Must be iPhone with iOS 5.0 or later or Android 2.2 or later and with Bluetooth® 2.1 or higher.
	Module wasn't in Bluetooth® pairing mode	Press Discover button in smartphone app under Settings/Bluetooth Connectivity and ensure blue LED begins flashing every second
	Too far away from the module	Must be within 30 feet of the module for Bluetooth® functions.
Can't get the module Key Fob to control vehicle keyless entry system	Not paired	See "Can't get the module Key Fob to pair with my vehicle"
	No internet connection to smartphone, computer or the module	Check internet connection to smartphone or computer. Start engine and watch for green or yellow LED activity. If LED remains red, the module has no cellular connection
	No Bluetooth® connection (if paired and authorized) and within 30 feet of the module	Verify smartphone Bluetooth® is on. Verify the module (ACT212) is listed in smartphone paired Bluetooth® devices. Verify smartphone is listed in smartphone app in Settings page as Authorized.
	OEM vehicle restriction	Check if the OEM key fob can perform the same feature. If not, it is a vehicle restriction. Read the vehicle owner's manual about your remote keyless entry system.