

U.S. Cellular® 4G LTE™ Router (LG2200D)

Highlights

Fast and reliable 4G LTE mobile connectivity for home or office.

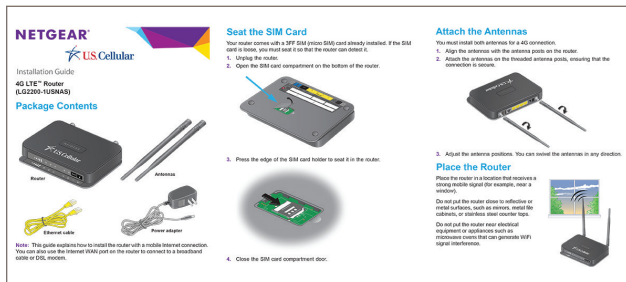
The 4G LTE Router from NETGEAR allows users to access and share a 4G LTE mobile broadband connection via Wi-Fi and Ethernet to ensure “always-on” connectivity. It is ideal for situations where a wireless network is needed, or wherever conventional Internet access is unavailable. Connect up to 4 wired Ethernet and over 30 Wi-Fi enabled devices.



Getting Started

Included in the box is an Installation Guide which provides all the information needed to get started, including:

- How to attach the two antennas onto the threaded antenna posts.
- Where to place the router to receive a strong mobile broadband signal.
- How to power on the router and connect computers and Wi-Fi devices.
- How to use the NETGEAR genie® web user interface.



Where To Place The Router

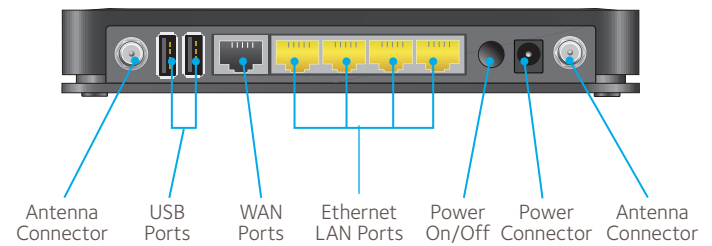
To optimize performance:

- Position the router in an elevated location in the center of the area where the computers and other devices operate.
- Place the router where it can receive a strong mobile signal (e.g., near a window, doorway or drywall where the signal can easily pass—avoid reflective, metal, or dense surfaces, such as mirrors, metal file cabinets, stainless steel counter tops, concrete, or brick walls).
- Keep 1-2m away from electronics that generate RF interference (e.g., microwave ovens, TVs, cordless phones).

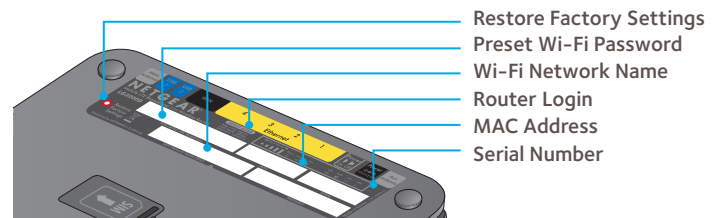
Connecting A Device To The Router

There are two ways to connect devices to the router: wired and wireless.

- For a wired connection, a user would connect a computer using the included Ethernet cable to a yellow Ethernet LAN port on the rear panel of the router.



- For a manual Wi-Fi connection on a computer or wireless device, a user would connect their wireless device using the unique Wi-Fi network name (SSID) and Wi-Fi password shown on the label located on the underside of the router. Note: the Reset button can be used to restore factory settings if the preset SSID and password are ever modified and forgotten.



- For a WPS Wi-Fi connection, a user avoids having to type the Wi-Fi password by using a Push ‘N’ Connect technique. The user simply presses the WPS (Wi-Fi Protected Setup) button on the front of the router and then within two minutes presses the WPS button on their wireless device.



WPS Button



Visit www.netgear.com for more product and support information.