

Samsung has released a software update for the US Cellular SCH-I500 (Mesmerize) which is recommended to be installed. This software will update your Samsung SCH-I500 (Mesmerize) to Android 2.3.4 software Version SCH-I500.EH09. For a complete list of modifications included in this update please refer to the **Release Notes** section at the bottom of this document.

**This Upgrade Is Only Valid For The US Cellular SCH-I500 (Mesmerize). It Is Incompatible With All Other Models.**

## Requirements

### COMPUTER

- Desktop/Laptop Computer Running Either Microsoft Windows 7, Vista, or XP
- All Firewall & Anti-Virus Programs Should Be Disabled
- Administrative Privileges Required To Download & Install Software Including Drivers
- An Available USB Port On The PC That Supports USB 2.0

### PHONE

- **Important:** Fully charge the battery before updating your phone

### OTHER

- USB Data Cable (Included In Retail Box)
- Available USB Port.
  - Direct connection of the USB cable to the computer's USB port is strongly advised. The use of a USB hub or docking station is NOT recommended.
- **Important:** Any Previous Samsung Software or Samsung Drivers Should Be Removed, Then Restart Your Computer.

## Back Up Your Information Before Software Upgrade

The upgrade process will **Erase ALL User Data** from the device, including contacts, messages and 3<sup>rd</sup> party applications, and all settings values will be initialized.

Please ensure that all critical information has been **Backed Up** before applying this upgrade.

- By syncing your Google Gmail and Exchange Mail accounts, you are backing up your information. Google Gmail and Exchange Mail information on your SCH-I500 (Mesmerize) are stored remotely on the Google and Microsoft Exchange server.

- After the upgrade, you can log back into your Google Gmail and Exchange Mail accounts to retrieve your information. Follow the steps below to sync your information.
  - **Google Gmail**
    1. From the Home screen, touch **Menu > Settings > Accounts & Sync**.
    2. Touch your Google account to display the **Data & synchronization** screen.
    3. To sync your Gmail, Calendar or Contacts, touch the setting to enable synchronization, a check mark appears in the check box.
    4. Touch **Menu > Sync now**.
  - **Exchange Mail**
    1. From the Home screen, touch **Menu > Settings > Accounts & Sync**.
    2. Touch your Exchange Mail account to display the **Data & synchronization** screen.
    3. To sync your Email, Calendar or Contacts, touch the setting to enable synchronization, a check mark appears in the check box.
    4. Touch **Menu > Sync now**.
  - **Save Contacts to SD Card**
    1. From the Home screen, touch **Contacts > Menu**.
    2. Touch **Import/Export > Export to SD card**.
    3. Confirm export by selecting **OK**.
- Pictures, music, video, and files are stored on your microSD Memory Card. Please remove your microSD Memory card before you start the update process.
- Text messages will be lost. To save important text messages, you can forward it to an email address.
  1. From the Home screen, touch **Messaging**.
  2. Select text message that you want to save.
  3. Press and hold the text message. You will see a menu to **Forward** the message.
- Any installed applications downloaded from the Android market must be re-installed. To re-download applications follow the steps below:
  1. From the Home screen, touch **Applications > Market > Menu > My Apps**.
  2. If prompted, sign in with your Google account credentials.

Paid applications will populate in the list shown. Free applications will have to be searched for again and downloaded manually.

This Upgrade Tool is **Not Compatible** with any Other Product.

## Check The Current Version On Your US Cellular SCH-I500 (Mesmerize)

Based on the software version you are upgrading from, the upgrade will perform different procedures and will required multiple mobile device reboots.

To find the software version on your US Cellular SCH-I500 (Mesmerize):

1. From the Home screen, touch **Menu > Settings > About phone**.
  - Build number SCH-I500.DI14 (Android 2.1)
  - Build number SCH-I500.EC10 (Android 2.2)
  - Build number SCH-I500.EE19 (Android 2.2)

## Step One: Obtain Software Upgrade Tool

To obtain a copy of the Software Upgrade Tool, click the download button below.

[Download Now!](#)

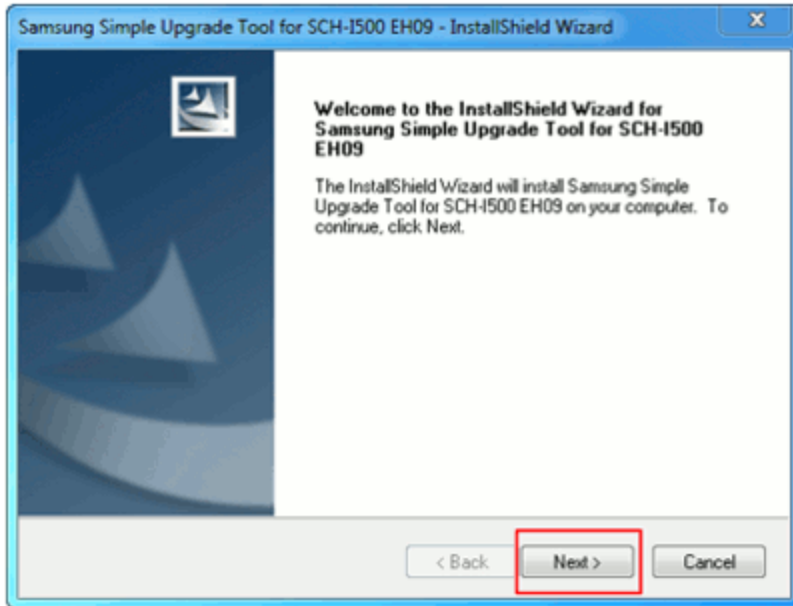
Save the file to a specified location, recommend desktop for easy access.

## Step Two: Install Samsung Simple Upgrade Tool on your Desktop

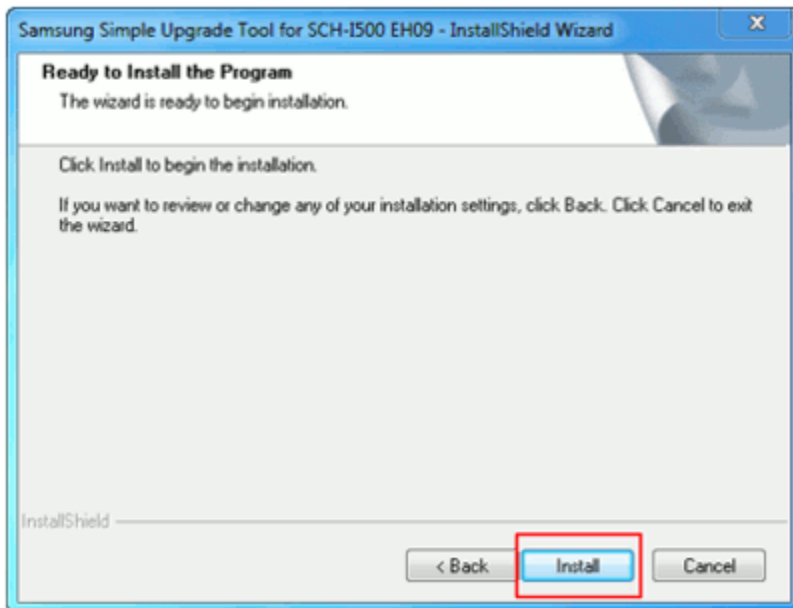
1. Close all open programs
2. Click on **Setup** icon to execute the InstallShield Wizard.



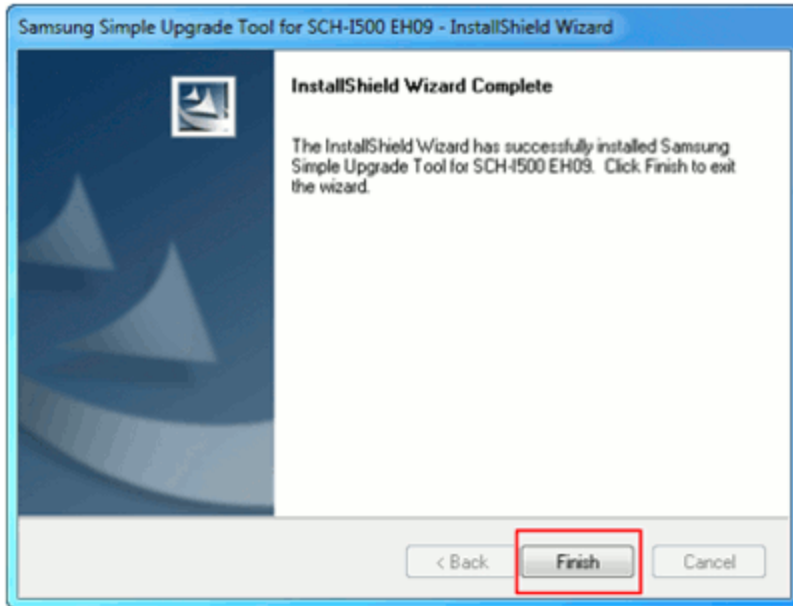
3. The InstallShield Wizard will install Samsung Simple Upgrade Tool on your computer. Select **Next >** to continue.



4. Select **Install** to begin the installation.



5. InstallShield Wizard has successfully installed the Samsung Simple Upgrade Tool. Select **Finish**. If directed to Restart computer, select **Yes, I want to restart my computer now** and Select **Finish**.



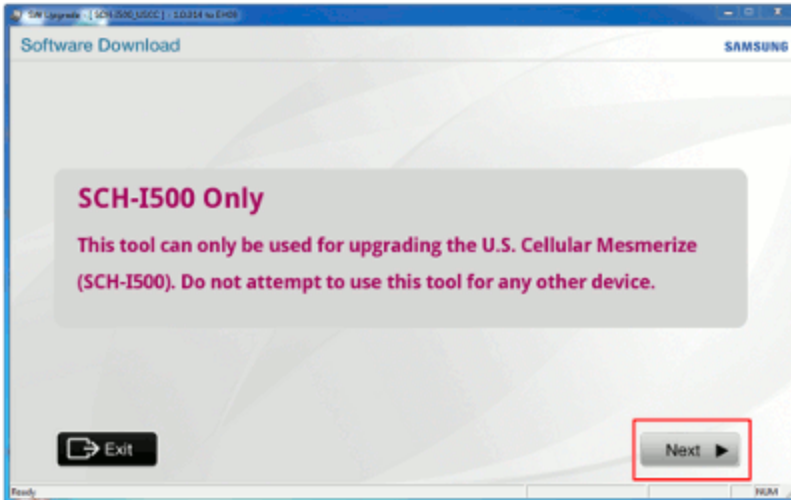
6. Please Notice the new **SW Upgrade** icon that has just been installed on your Desktop.

### Step Three: Upgrade the US Cellular SCH-I500 (Mesmerize) to Software EH09

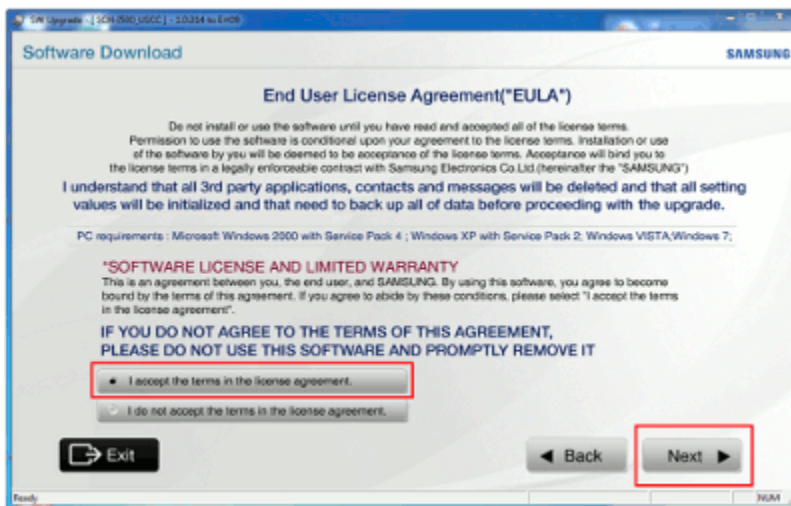
1. Click on the **SW Upgrade** icon on your Desktop



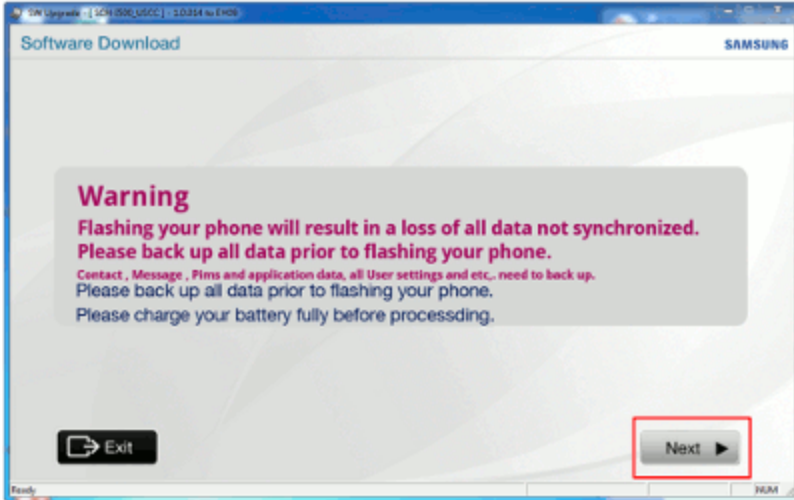
2. This upgrade is only valid for the US Cellular SCH-I500 (Mesmerize). Select **Next**.



3. After reading the End User License Agreement, check the button “I accept the terms in the license agreement.” and then select **Next**.

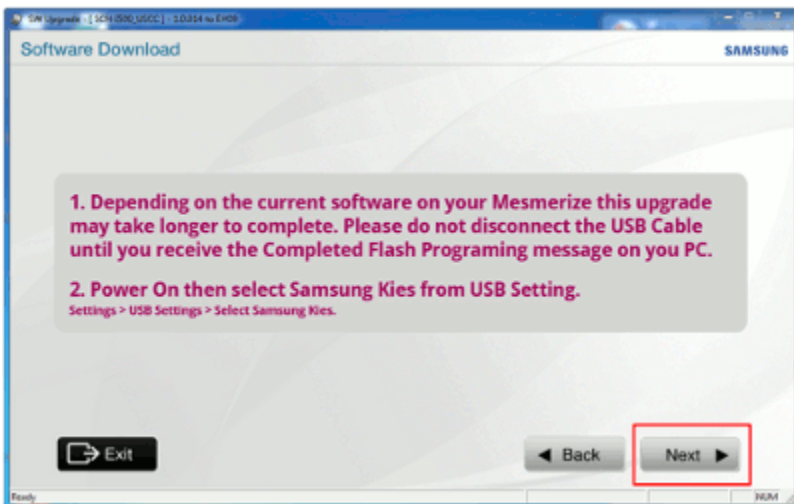


4. A warning will prompt you to synchronize the data on your mobile device and to charge your battery fully before proceeding with the software upgrade. Select **Next** after these steps have been performed.



5. Power on the mobile device and set the USB Setting to Samsung Kies.

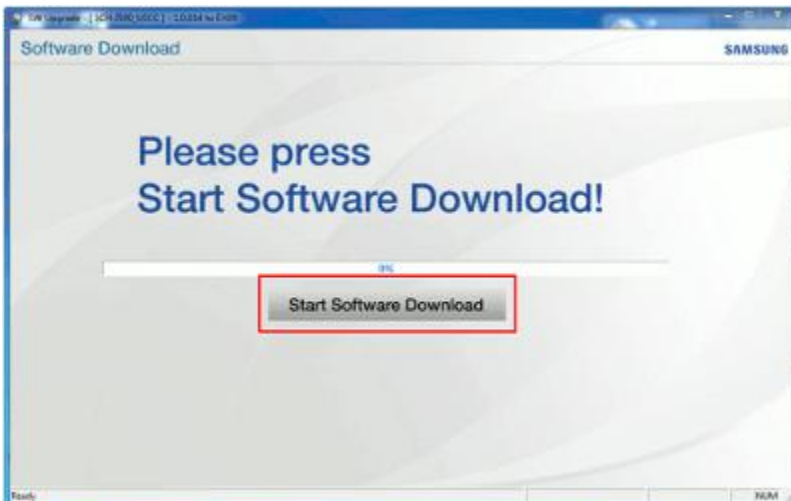
From the Home screen, press the **Menu** > **USB Settings** > **Samsung Kies**. Select **Next**.



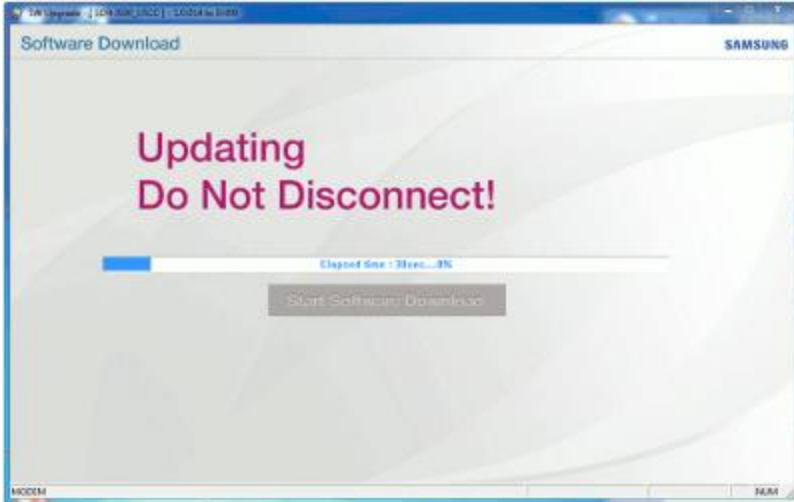
6. Attach the USB cable from the computer to the mobile device and select **Next**.



7. Press **Start Software Download** button to start the upgrade process.



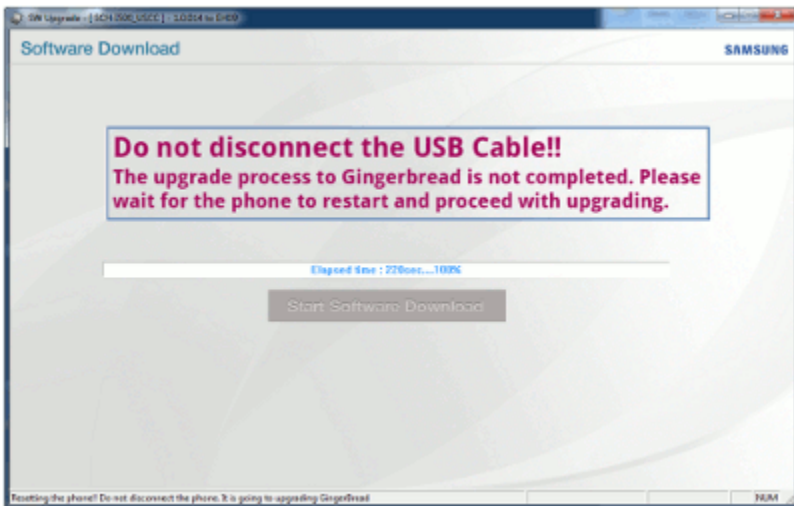
8. **Please Do Not Disconnect The USB Cable From The Computer Or The Mobile Device. The Mobile Device May Be Inoperable If Disconnected During Upgrade Process.**



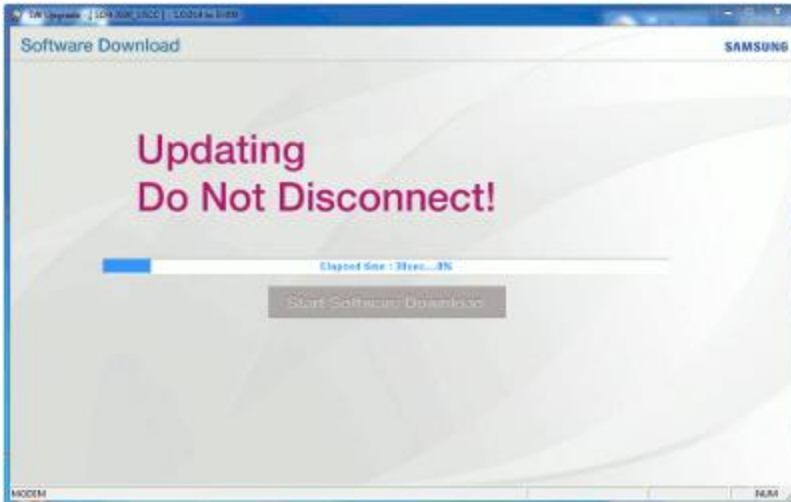
9. If upgrading from Build number SCH-I500.EC10 or Build number SCH-I500.EE19, proceed to Step 10 below.

When upgrading from Build number SCH-I500.DI14 the mobile device will restart.

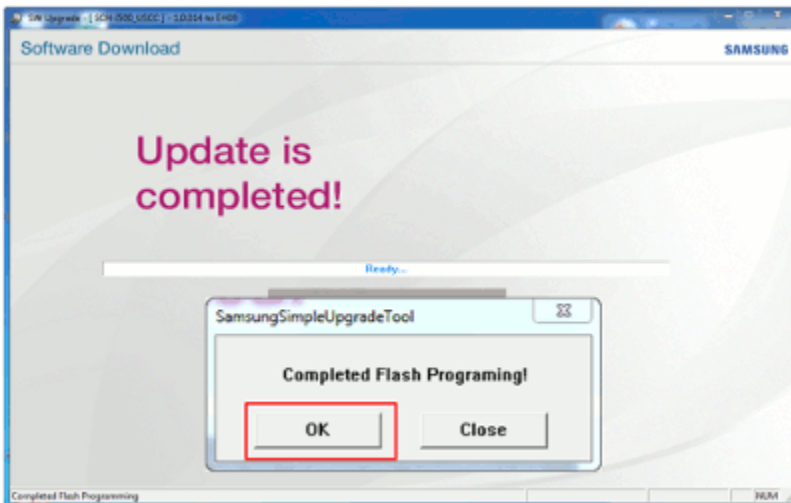
**Do Not Disconnect The USB Cable From The Computer Or The Mobile Device.**



Once the mobile device has restarted, the software upgrade will continue.



10. A popup message will show that the software upgrade is complete. Select **OK**.



11. After software upgrade, the phone will restart.
12. Unplug the USB cable from the computer and the mobile device.

#### Step Four: Verify the US Cellular SCH-I500 ( Mesmerize) Software Version

After completion of the EH09 upgrade, please verify the software on the phone is accurate.

1. From the Home screen, press the **Menu > Settings > About Phone**.
2. The software version will be listed under the **Build number** heading and will be **SCH-I500.EH09**

## Release Notes

Please see below for a list of changes found in the US Cellular SCH-I500 (Mesmerize) EH09 update.

- Google platform upgrade to Gingerbread 2.3.4 Operating System.
- The notification bar is updated to Google Gingerbread style: icons and background images.
- The quick panel is changed to the Google Gingerbread style.
- The signal strength bar is changed from 4 levels to 5 levels.
- The signal strength bar changes color based on the Google login status.
- The Android keyboard is updated with a new color design and layout.
- For text input, the word selection feature is changed to a novelty word selection feature.
- For power management, the Battery use screen is updated with Phone signal, Awake, Screen on and Charging time.
- For application management, the Manage application screen is updated with a storage usage status gage for System storage, USB storage and RAM.
- Android keyboard settings updated with “Touch to correct words” option.
- Calendar application, added “Show extra options” options menu when creating an event or editing an event: “Show me as” and “Privacy”.
- Calendar application, added “Lock time zone” option in the Calendar settings. Lock event times and dates to your selected time zone below. Times and dates will not change even if you move to another time zone.
- Applications, added new Download application to the application list.

---

For more information on the SCH-I500 Mesmerize, a Galaxy S phone, please click the banner below.

