

US Cellular : How Do I Update The Software On My US Cellular SCH-R880 (Acclaim) Phone To Android 2.2 Froyo DL25 Build?

Samsung has released this software upgrade for the US Cellular SCH-R880 (Acclaim), which is recommended to be installed. This software upgrade will upgrade your Samsung Acclaim from Android Version 2.1 to Android Version 2.2.

For a complete list of improvements and modifications included in this upgrade please refer to the **Release Notes** section at the bottom of this document. The update may take up to 10 minutes to complete if the system is already set up.

Requirements For Using Software Upgrade Tool

COMPUTER

- Desktop/Laptop Computer Running Either Microsoft Windows 7, Vista or XP with Service Pack 2 or higher
- 200MB open hard disk space
- All Firewall & Anti-Virus Programs should be disabled
- Administrative privileges required to download & install software
- Available USB Port on the PC

PHONE

- Fully charged battery
- The upgrade requires a minimum of 20MB of available memory. Follow the steps below to check available memory on the phone and if additional space is required how to uninstall applications from the phone.
 - **To check available memory:**
 1. From the **Main** screen press **Menu**
 2. Tap **Settings**
 3. Tap **SD card & phone storage settings**
 4. See **Internal phone storage** for available space
 - **To uninstall applications from the phone:**

Note: The uninstall behavior may vary slightly from application to application. In addition, applications that are preloaded may not be removed.

1. From the **Main** screen press **Menu**
2. Tap **Settings**

3. Tap **Applications**
4. Tap **Manage applications**
5. Press the **Menu** key, then **Filter**
6. Select **Downloaded**
7. Tap on the desired application destined for removal
8. Tap **Uninstall**
9. Tap **OK**

OTHER

- USB data cable (Included In Retail Box)

***** IMPORTANT - BEFORE DOWNLOADING THE UPGRADE TOOL *****

***** WARNING *****

You Will Be Unable To Use The US Cellular SCH-R880 (Acclaim) During The Upgrade Process.

This Upgrade Is Only Valid For The US Cellular SCH-R880 (Acclaim) Handset. It Is Incompatible With All Other Models.

Check The Current Version On Your Phone

To find the software version on your US Cellular SCH-R880 (Acclaim)

1. From the **Main** screen, press **Menu**
2. Tap **Settings**
3. Tap **About Phone**
4. The Software Version will be listed under the **Baseband version** heading and will be in the format of **S:R880.X.XX.XXXX**
5. **If the Baseband Version Is S:R880.0.3K.DL25 A Software Update Is Not Needed At This Time. Handset Is Already On The Latest Software Load.**

What You Should Know Before You Upgrade

This Upgrade Tool is **Not Compatible** with any Other Product.

Please **Remove Your MicroSD Memory Card** before you start the update process.

During the upgrade process the following data will be **Backed Up and Restored**:

- Alarms
- Browser Bookmarks
- Calendar Events
- Call Logs
- Contacts – You may also backup your contacts with the My Contacts Backup application
- Email Accounts
- Gallery
- Google Market Apps
- Messages
- Music, Playlists, Ringtones

What you will need to setup after you upgrade the device:

- Camera and camcorder settings
- Widgets, short-cut, wallpaper and any other personalization

Update Process Overview

1. Obtain the Software Upgrade Tool
2. Launching of Setup icon to install SamsungSimpleDL on your Desktop
3. Downloading of the Software Update (DL25) to the phone
4. Verification of the phone's software version

Step One: Obtain Software Upgrade Tool

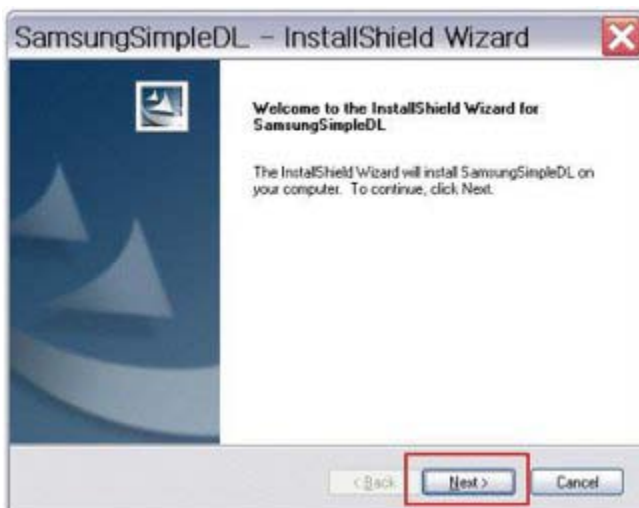
To obtain a copy of the SW Upgrade Tool you will have to click the "Download" button from the U.S. Cellular website.

Step Two:
Launching of Setup icon to install SamsungSimpleDL on your Desktop

1. Close all open programs
2. Click on **Setup** icon to execute the InstallShield Wizard.



3. The InstallShield Wizard will install SamsungSimpleDL on your computer. Select **Next>** to continue.



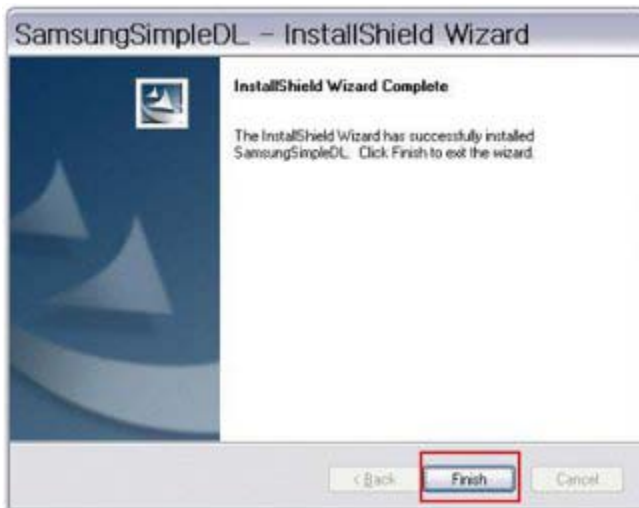
4. Click **Install** to begin the installation.



5. The InstallShield Wizard is now installing SamsungSimpleDL.



6. InstallShield Wizard has successfully installed the SamsungSimpleDL. Click **Finish**. If directed to Restart computer, select **Yes, I want to restart my computer now** and Select **Finish**.



7. Please Notice the new **SWUpgrade** icon that has just been installed on your Desktop.

Step Three:

Downloading Of The Software Upgrade (DL25) To The Phone

1. Click on the **SWUpgrade** icon on your Desktop



2. After reading the End User License Agreement, check the button "I **accept the terms...**" and then select **Next**.



3. A warning will prompt you to synchronize the data on your handset and to charge your battery fully before proceeding with the software upgrade. The upgrade requires a minimum of 20MB of available memory, please see section **Requirements For Using Software Upgrade Tool** for instructions to check available memory. Select **Next** after these steps have been performed.



4. Take the back cover from your phone off and remove battery. Put the battery back in the phone and put the cover back on. Select **Next** on the Software Upgrade tool.



5. Put the phone in Download Mode by simultaneously pressing and holding the Volume Down, Camera, and End keys on your handset. Hold the keys until the following screen appears. Select **Next**.



6. Attach the USB cable from the computer to the handset.



7. The device drivers are now installed. Unplug the USB cable from the computer and the handset. Select **Next**.



8. Take the back cover from the phone off and remove battery. Put the battery back in the phone and put the cover back on. Select **Next** on the Software Upgrade tool.



9. Put the phone in Download Mode by simultaneously pressing and holding the Volume Down, Camera, and End keys on your handset. Hold the keys until the following screen appears. Select **Next**.



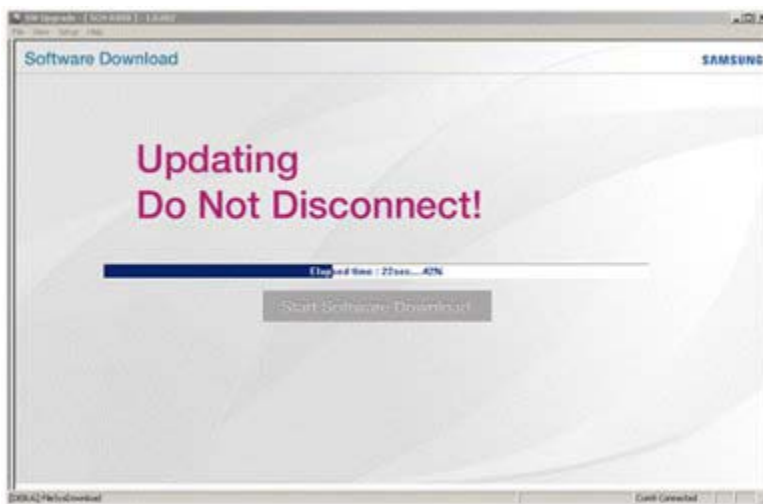
10. Attach the USB cable from the computer to the handset again. To ensure that the drivers were detected, a message on the bottom left hand corner shows **Ready**. On the bottom right hand corner, it will show **COM Connected**. Select **Next**.



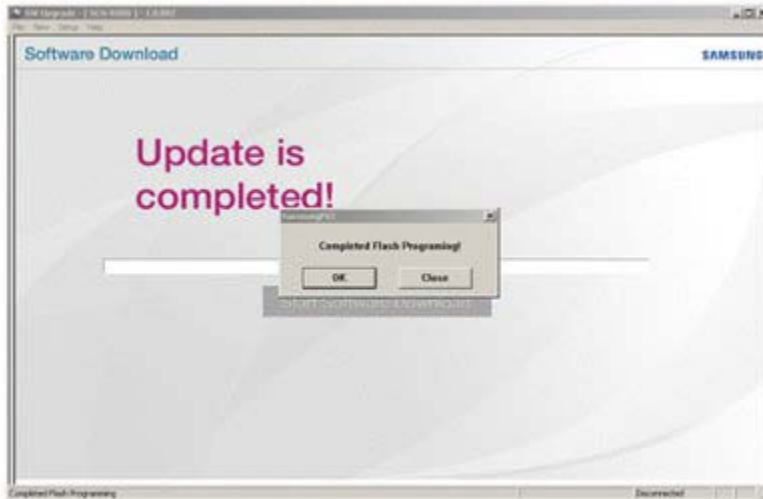
11. Press **Start Software Download** button to start the upgrade process.



12. **Please Do Not Disconnect The USB Cable From The Computer Or The Handset. The Handset May Be Inoperable If Disconnected During Upgrade Process.**



13. A popup message will show that the software upgrade is complete. Select **OK**.



14. After software upgrade, the phone will restart.

15. Unplug the USB cable from the computer and the handset.

16. Reinstall the MicroSD Memory Card.

Step Four:

Verifying The US Cellular SCH-R880 (Acclaim) Software Version

After completion of the DL25 upgrade, please verify the software on the phone is accurate.

1. From the **Main** screen, press **Menu**
2. Tap **Settings**
3. Tap **About Phone**
4. The software version will be listed under the **Baseband version** heading and will be in the format of **S:R880.0.3K.DL25**

Release Notes

Please see below for a list of changes found in US Cellular SCH-R880 (Acclaim) software upgrade DL25.

- **Improvements:**

- Google platform upgrade to Android 2.2 Froyo Operating System
- Portable Wi-Fi Hotspot – Share high-speed connectivity with up to five other devices.
- Improved Home Screen – Use dedicated shortcuts for instant access to phone functions, applications and the web browser. Increased the number of idle panels to 5.
- Lock Screen – New lock screen mode for entering a numeric pin or alphanumeric password.
- Google Mobile Services (GMS) – More integrated Google Services: GoogleQuickSearchBox, GenieWidget(News and Weather), Latitude, Navigator, Places
- Card App Storage – Save to and run apps from your memory card
- Exchange Support – Sync email, integrate your calendar and enhanced security features.
- Improved Performance – Faster website loading and smoother multitasking
- Camera – Onscreen buttons provide easy access to a new UI for controlling zoom, flash, white balance, geo-tagging, focus and exposure.
- Camcorder – Improves setting for video size/quality for MMS
- Multiple Keyboard Languages – Multiple languages have been added to the keyboard.
- My Contacts Backup – Version updated
- Your Navigator Deluxe – Version updated
- City ID – Version updated
- QuickOffice – Version updated

- **Modifications:**

- Alarm Clock application replaced with new Clock application
- Search Setting menu removed
- Text to Speech Settings menu change to Voice Input & Output
- Sound & Display Settings menu change to two menus
- Preloaded apps removed – File viewer, The weather channel, Facebook, evernote, Myspace Twidroid. These may be downloaded from the Market.

Supplemental FAQs

Below Are Some Anticipated Questions About The Upgrade

- What can I do if I accidentally disconnect my handset from the USB cable during the software upgrade process?
 - Disconnect the USB cable from the handset

- Restart **Step 3 Downloading Of The Software Upgrade(DL25) To the Phone**

- If I decide I do not like the update for my US Cellular SCH-R880 (Acclaim) can I reload (DF10) software?
 - It is not recommended to regress backwards to a previous software load. Any attempts to perform a regression may render the handset inoperable.

- What if some of my downloaded applications were not restored after I upgraded my device?
 - All installed applications should be restored. In the event that an application was not restored you will need to re-download the application from the Android Market. To re-download applications follow the steps below:
 1. Tap the **Applications Tab** and then tap **Market**
 2. If prompted, sign in with your Google account credentials
 3. Tap My Downloads
Paid applications will populate the list shown. Free applications will have to be searched for again and downloaded manually.

- Can I reflash the DL25 upgrade after my US Cellular SCH-R880 (Acclaim) has been updated to DL25?
 - Yes, it is possible to reflash the device with DL25.