

How Do I Update The Software On My US Cellular SCH-i500 (Mesmerize) Phone To Froyo (EC10) Through Kies Mini?

Samsung has released this software upgrade for the US Cellular SCH-i500 (Mesmerize) . This software upgrade will upgrade your Samsung Mesmerize from Android Version 2.1 to Android Version 2.2. For a complete list of improvements and modifications included in this upgrade please refer to the What's New FAQ by [clicking here](#).

Notice: Please back up all data such as your contacts, pictures, music, videos etc... prior to performing the update as data could be lost.

Requirements

COMPUTER

- Desktop/Laptop Computer Running 32bit Versions Of Either Microsoft Windows 7, Vista, or XP
- All Firewall & Anti-Virus Programs Should Be Disabled
- Administrative Privileges Required To Download & Install Software Including Drivers
- An Available USB Port On The PC That Supports USB 2.0

PHONE

- Fully Charged Battery

OTHER

- USB Data Cable (Included In Retail Box)
- Any Previous Samsung Kies Software Should Be Removed

Data Loss Caution

When upgrading to Froyo, certain types of data or settings are known to be lost.

- Desktop/Folders & applications shortcuts on the idle screen
- Settings for music
- Buddies Now link information
- Daily Briefing settings
- AllShare settings
- Portable Hotspot settings
- Google Talk settings and account information

- Desk Cradle settings
- Downloaded ringtones encrypted with DRM software

Step 1: Obtaining Kies Mini

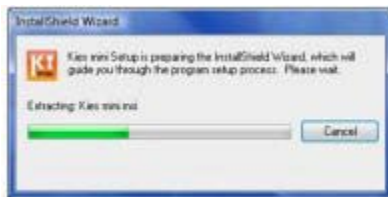
To obtain the a copy of Kies Mini, click on the download button below.



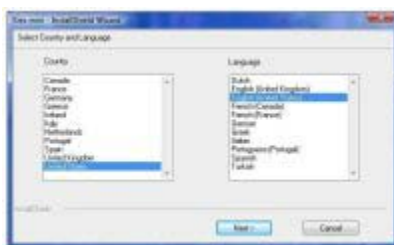
Save the file to a specified location, recommend desktop for easy access.

Step 2: Installing Kies Mini

1. Double click the Kies Mini file. The program will then extract files needed for installation. No action is required.



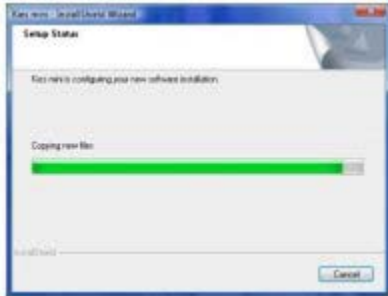
2. Location and language is selected by default, click the Next button.



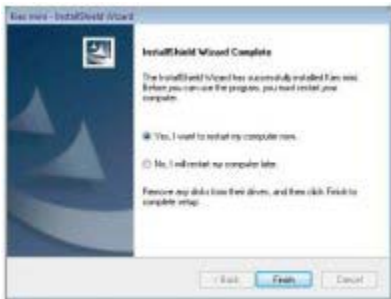
3. Read over the license agreement, check "I accept the terms..." and then click the Next button



4. Kies Mini will begin installation. No action is required.





5. Click Finish to restart the computer



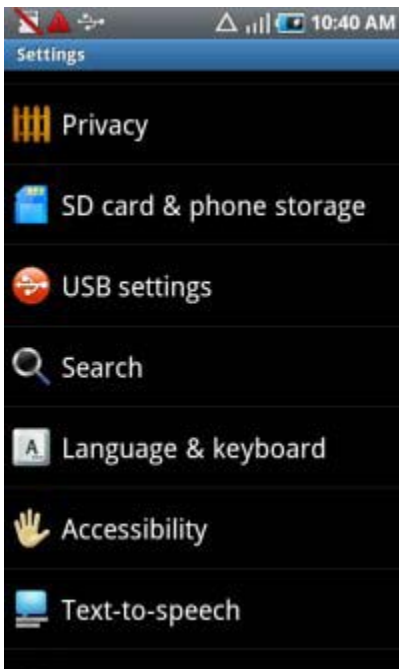
Step 3: Configuring Device/Driver Install


While the computer is restarting, we will need to configure the phone so that Kies Mini detect the phone. Follow the steps below:

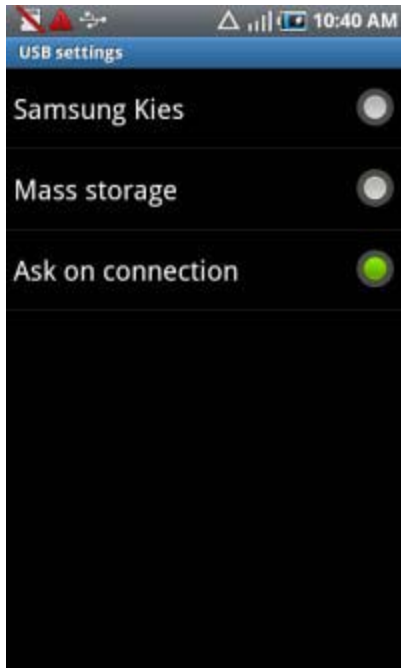
1. Press the Home Key 
2. Press the Menu Key 
3. Tap on Settings



4. Tap on USB Settings



5. Tap on Ask on connection and press the Home  key



6. Insert the USB data cable into the phone and then into an available port on the computer. Select Samsung Kies from the phone. The computer should recognize several devices and begin installation. This is normal and may take a few moments. Unplug the data cable when completed.

Step 4: Device Upgrading

Notice: Please verify your data is backed up to the medium of your choice. Data loss may occur after upgrading.

1. Open Kies Mini and plug the USB cable into the phone. Select Samsung Kies from the phone when prompted.



2. Click on Phone Upgrade.



3. Read over the Caution statements and check "I have read and understood..." and then click the Upgrade button.



4. Kies Mini will contact the server and download the binary. Downloading time varies on network conditions. It may take a few minutes.



5. Kies Mini will start upgrading the device.



6. Click the Ok button to finish.



Common Questions

General Questions:

- Will Kies Mini work on my Mac?
 - No, this build of Kies Mini works on a PC.
- How can I get the update if I have a Mac?
 - For customers who have a Mac, please visit one of the US Cellular retail locations with a service technician to get the upgrade.
- Can I use Kies to perform the update?
 - Only Kies Mini is supported within the United States. Kies is not recommended nor officially supported on Galaxy S phones in the US. If you have a version of Kies, it is recommended to remove it entirely before installing Kies Mini.
- What are the capabilities of Kies Mini?
 - Kies Mini is a simple tool which performs firmware updates for a phone. Other options that may accompany the tool are unsupported for this product.

- Can I use Kies Mini to update other models of Galaxy S?
 - No. This build 11032_1 of Kies Mini is approved for Mesmerize only.

Kies Mini Does Not Detect The Phone:

:

- Depending on the amount of data stored on the memory, this could impair Kies Mini ability to detect device if phone is set to Samsung Kies mode. It may be necessary to remove the microSD card if inserted. Should problems persist, the internal memory may need to be purged. Backup up all desired data and then goto Menu>Settings>Privacy >Factory Data Reset. Follow the onscreen instructions and after reboot, attempt to connect to Kies Mini.
- The Media Scan process could produce a loop if connected while in progress. If this occurs, disconnect and power cycle the device. Wait until the device fully boots and the process is finished before connecting again.
- When the handset goes into download mode instructed by Kies Mini, additional drivers need to be installed. A timeout may occur from the time the drivers install until Kies Mini can detect. Should this occur, close Kies Mini and remove the cable. Next, remove the battery cover and battery. Afterwards, insert the battery, place the cover back on, and power on the device. When the device reboots, connect the data cable and open Kies Mini.

For more information on the SCH-i500 Mesmerize, a Galaxy S phone, please click the banner below.

